

Jeep[®]

WAGONEER

2025
WAGONEER S
BUYER'S GUIDE



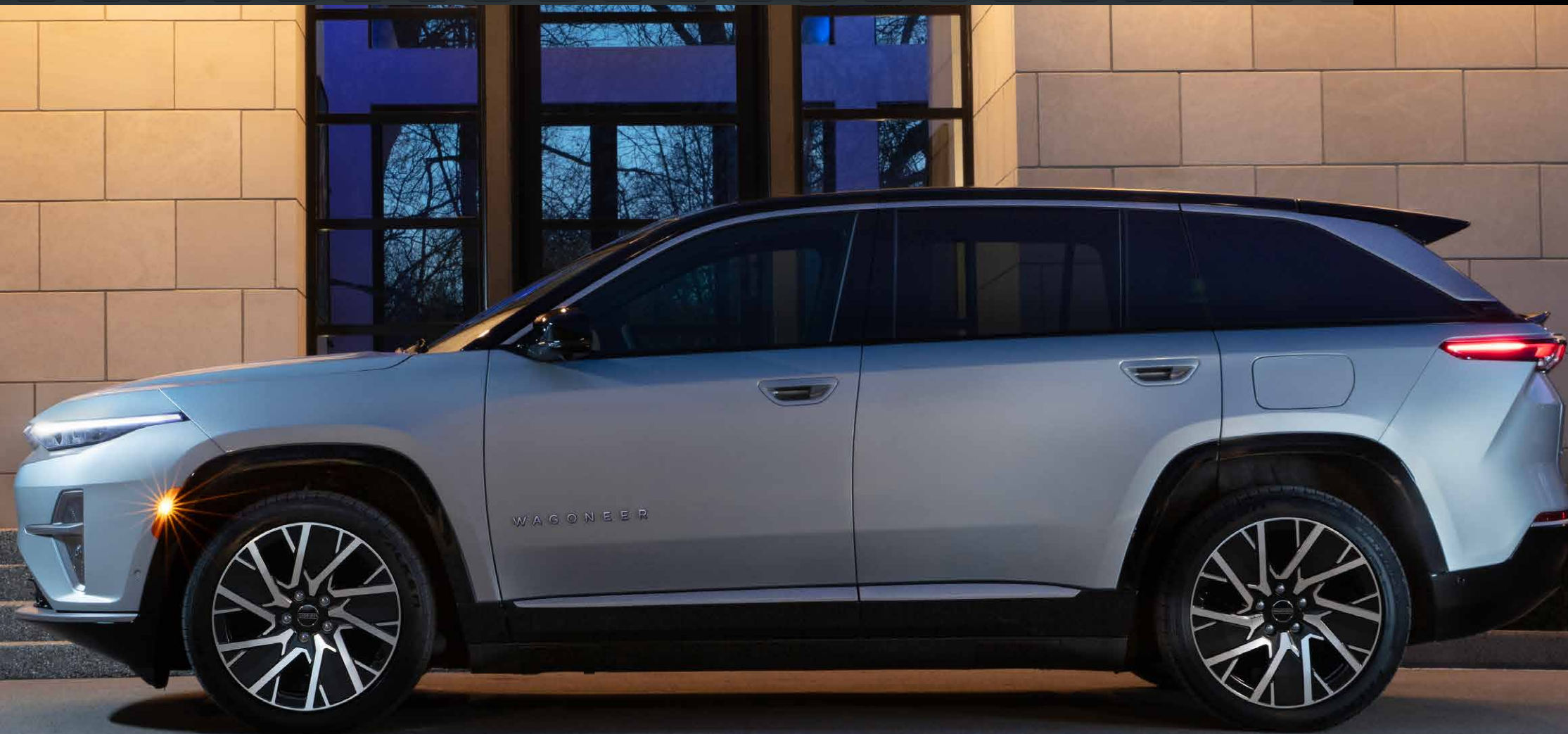
MAKE EVERY
ADVENTURE
EXQUISITELY
REFINED

Seek freedom in style with the all-electric 2025 Jeep® Wagoneer S. Crafted with the same passion and adventure woven into every Jeep Brand vehicle, Wagoneer S is a showcase of elegant appointments and impressive performance credentials: up to 294 miles* on a single charge, up to 600 horsepower and 0-60 mph with rollout subtracted in 3.4 seconds. The first fully Electric Vehicle (EV) in North America from the Jeep Brand is everything you need for a modern life.

* A note about this brochure: all disclosures can be found on the last page.



A SLEEK AND ENLIGHTENED PROFILE



Limited in Silver Zynith

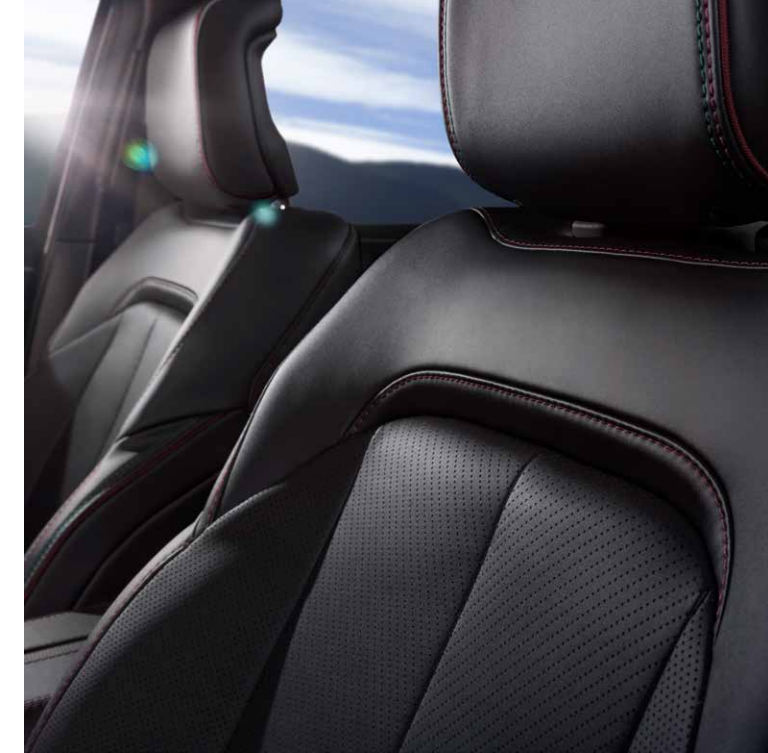
THE ELEGANCE OF UNCOMPLICATED DESIGN

Muted brightwork, matte finishes, satin tones and a Black roof are designed not to distract from the sculpted exterior. Further sophistication and elegance come from robust 20-inch wheels on low-profile tires and the R-wing off the rear hatch. Open-air freedom is experienced through the standard dual-pane panoramic sunroof.

AN AUTHENTIC ORIGIN STORY The seven-slot grille is iconic to the Jeep® Brand, and the cantilevered design is telltale to the Wagoneer nameplate. As an Electric Vehicle (EV), airflow isn't needed to cool an engine. Instead, distinctive LED lights illuminate the front end.

MAXIMIZING EFFICIENCY The Wagoneer S airflow management system boasts a series of integrated underbody aero shields, side sills that direct air around the wheel arch, flush door pulls and a front grille with active aero shutters. The result is an extremely low drag coefficient among Jeep Brand vehicles.

THE BEAUTY WITHIN



Surround yourself with evolved design and fine details, such as perforated leatherette power seats, soft-wrapped door bolsters and armrests, available suede headliner and a tailored driver control center with a unique Selec-Terrain® toggle. Premium technology seamlessly integrates throughout the entire width of the instrument panel with up to 45 inches of total display screen area. The mood can match your drive via dynamic direct ambient lighting with 64 selectable colors.

WAGONEER S LIMITED

STANDARD

CAPABILITY/FUNCTIONALITY

- Dual All-Electric 400-kW Drive Motors, Powered by 400-volt Battery Pack for Maximum Output of 500 hp and 524 lb-ft of Torque
- Battery Electric Vehicle (BEV) Cooling
- 4x4 Drive System
- Selec-Terrain® Traction Management System
- Battery Charge Indicator
- Heavy-Duty Suspension
- Underbody Aerodynamic Treatment
- Active Grille Shutters

EXTERIOR

- Seven-Slot Illuminated Grille
- Gloss Black-Painted Roof
- Dual-Pane Panoramic Sunroof
- Upper and Lower Rear Spoilers in Gloss Black
- Gloss Black Lower Rocker Panel Cladding, Door Cladding and Wheel Flares
- Silver Silk Exterior Accents, including Lower Bodyside, Front and Rear Fascia Appliqués, Daylight Opening Upper Moldings and Badges
- Body-Color Flush Door Handles
- 20-inch Painted Diamond-Cut Aluminum Wheels
- Proximity Approach/Departure Lamps
- 235/50R20XL All-Season LRR Tires
- Automatic LED Projector/Reflector Headlamps with Auto High-Beam Headlamp Control
- LED Taillamps and Daytime Running Lamps (Park/Turn)
- LED Front Fog Lamps
- Automatic Power-Foldaway, Heated Mirrors in Gloss Black with Auto-Dimming Glass on Driver's and Passenger Sides, Memory, Turn Signals, Auto-Adjust-in-Reverse and Courtesy Lamps
- Acoustic Laminated Front/Rear Door Glass
- Acoustic Windshield
- Deep-Tint Sunscreen Glass
- Heated Washer Nozzles
- Frunk - Front Trunk Storage Space

- Windshield Wiper De-Icer
- Rain-Sensitive Windshield Wipers
- Shark-Fin Antenna
- Tire Service Kit

INTERIOR

- Neo Ultra Lux II Leatherette Seats
- Ten-Way Power-Adjust Driver's and Front-Passenger Seats, including Two-Way Power Lumbar Adjust
- Four-Way Adjustable Driver's and Front-Passenger Headrests
- Heated Front Seats
- Driver's-Seat Memory
- Soft-Touch Armrests
- 60/40 Split-Folding Rear Seats with Three Rear-Seat Head Restraints and Middle Rear Seat with Armrest and Cup Holder
- Cloth Headliner
- Ambient Light Color Control
- Power Liftgate
- Power Windows, Front/Rear One-Touch Up and Down
- 12-inch Digital, Full-Color, Driver Information Display
- Map-in-Cluster Display
- Uconnect® 5 NAV with 12.3-inch Touchscreen Display, including GPS Navigation², HD Radio, Wireless Apple CarPlay^{®3} Support and Android Auto^{™4} Integration, Integrated Voice Command with Bluetooth[®], SiriusXM[®] with 360L⁵, 4G LTE Wi-Fi Hotspot⁶ and Jeep[®] Connect⁷
- Alpine[®] Nine-Speaker Premium Audio System with 500-Watt Amplifier and Eight-inch Subwoofer
- Center Console Comfort Controls Multi-Color Screen
- Radio Memory
- Premium-Wrapped, Heated Steering Wheel with Mounted Audio Controls
- Electric Power Steering
- USB Connections:
 - Front, Dual, Full-Function Type-C⁸
 - Rear, Dual, Charge-Only Type-C
- Dual-Zone Automatic Temperature Control, including Humidity Sensor and Cabin Filter
- Remote Climate Control Activation
- Mini Overhead Console

- Full-Length Front-Row Center Console
- Rearview Auto-Dimming Mirror
- Sun Visors with Illuminated Mirrors
- Speed-Sensitive Power Door Locks
- Luxury Front and Rear Floor Mats
- LED Overhead Cargo Area Lighting
- Reversible Carpet/Vinyl Cargo Mat
- Tilt/Telescoping Steering Column
- Cargo Tie-Down Loops
- Assist Handles
- Front Reading/Map Lamps
- Rear Reading/Courtesy Lamps
- Glove Box with Lamp
- Rear Window Defroster
- Two 12-volt Auxiliary Power Outlets
- Wireless Charging Pad
- Low Washer Fluid Warning Signal

SAFETY & SECURITY

- Air Bags⁹: Advanced Multistage Front, Inflatable Knee Bolster for Driver, Supplemental Front- and Rear-Seat-Mounted Side and Supplemental Side-Curtain for All Rows
- Active Driving Assist System¹⁰
- Four-Wheel Traction Control
- All-Speed Traction Control
- Rough-Road Cruise Control¹⁰
- Adaptive Cruise Control with Stop & Go¹⁰
- Active Lane Management System¹¹
- Traffic Sign Information
- High-Speed Overtake Warning
- Blind Spot Monitoring¹² and Rear Cross-Path Detection¹³
- Side-Distance Warning
- 360° Surround-View Camera System¹³
- Front and Rear Camera Washer
- ParkSense[®] Front/Rear Park Assist with Stop¹⁴
- ParkSense Automated Parking System¹⁴
- Intersection Collision Assist System¹⁵
- Full-Speed Forward Collision Warning Plus¹⁶
- Advanced Brake Assist¹⁶
- Antilock Four-Wheel Disc Brakes
- Electric Park Brake
- Rain Brake Support and Ready Alert Braking
- Pedestrian/Cyclist Emergency Braking¹⁶
- Electronic Stability Control¹⁷
- Electronic Roll Mitigation

- Hill Start Assist
- Trailer Sway Damping¹⁸
- Hold 'N Go
- Security Alarm¹⁹
- Tire Pressure Monitoring Display
- Selectable Tire-Fill Alert
- Lock-on-Sync Tire Pressure Sensor
- Drowsy-Driver Detection¹⁰
- Electric Vehicle (EV) Acoustic Vehicle Alert System (AVAS)
- Rear-Door Child Protection Locks
- Four-Door Passive Entry, Front-Door Locks
- Illuminated Entry

AVAILABLE

- **Comfort Package**
 - Ventilated Front Seats
 - Front-Passenger Interactive Touchscreen Display
 - Memory Steering Column
 - Power Windows Global Down with Key Fob
 - Digital Rearview Auto-Dimming Display Mirror
 - McIntosh[®] MX920 Entertainment System includes 19 Speakers, 920-watt Premium Audio Sound System and 10-inch Subwoofer
 - 115-volt Auxiliary Power Outlet
 - Head-Up Display
 - Power Tilt/Telescoping Steering Column
 - Hands-Free Power Liftgate
 - Tonneau Cover
- **Trailer Tow Group**
 - Class III Hitch Receiver
 - Seven- and Four-Pin Wiring Harness
 - Blind Spot Monitoring¹² with Trailer Detection¹⁸
- **Propulsion Boost Package**
 - 500-kW Electric Drive Power Output for Maximum 600 hp
- **Obsidian Package**
 - Dark Titanium Exterior Accents, including Grille Surround, Lower Bodyside, Front and Rear Fascia Appliqués, Daylight Opening Upper Moldings and Badges
 - 20-inch Gloss Black-Painted Aluminum Wheels



Neo Ultra Lux II with Axis II Perforations, Wine Accent Stitching and Crescent Piping — Global Black (Standard)



Neo Ultra Lux II with Axis II Perforations, Wine Accent Stitching and Crescent Piping — Global Black/Arctic (Available)



20-inch Painted Diamond-Cut Aluminum (Standard)



20-inch Painted Aluminum (Available)



20-inch Gloss Black-Painted Aluminum (Standard with Obsidian Package)



Limited in Red Hot Pearl

WAGONEER S LAUNCH EDITION

STANDARD

Adds from Wagoneer S Limited:

CAPABILITY/FUNCTIONALITY

- Dual All-Electric 500 kW Drive Motors, Powered by 400-volt, 100.5-kWh Battery Pack for Maximum Output of 600 hp and 617 lb-ft of Torque

EXTERIOR

- Dark Titanium Exterior Accents, includes Grille Surround, Lower Bodyside, Front and Rear Fascia Appliqués, Daylight Opening Upper Moldings and Badges
- 20-inch Painted or Gloss Black-Painted Aluminum Wheels

INTERIOR

- Neo Ultra Lux III Leatherette Seats
- 16-Way Power Adjust Driver's and Front-Passenger Seats including Four-Way Power Lumbar Adjust
- Heated/Ventilated/Massaging Front Seats
- Heated/Ventilated Rear Seats
- Front-Passenger-Seat Memory
- Suede Headliner
- McIntosh® MX1200 Entertainment System includes 19 Speakers, 1,200-watt Premium Audio Sound System and 12-inch Subwoofer
- Memory Steering Column
- Power Tilt/Telescoping Steering Column
- Power Windows Global Down with Key Fob

AVAILABLE

• Luxury Group

- Front-Passenger Interactive Touchscreen Display
- Hands-Free Power Liftgate
- Digital Rearview Auto-Dimming Display Mirror
- 115-volt Auxiliary Power Outlet
- Head-Up Display
- Tonneau Cover

• Trailer Tow Group

- Class III Hitch Receiver
- Seven- and Four-Pin Wiring Harness
- Blind Spot Monitoring¹² with Trailer Detection¹⁸



Neo Ultra Lux III with Axis II Perforations, Blue Agave/Wine Dual Accent Stitching and Rouge Piping — Global Black (Standard)



Neo Ultra Lux III with Axis II Perforations, Blue Agave/Light Slate Gray Dual Accent Stitching and Frost Piping — Black/Radar Red (Available)



20-inch Painted Aluminum (Standard)



20-inch Gloss Black-Painted Aluminum (Standard)



Launch Edition in Silver Zynith

WAGONEER

COLORS*

Silver Zynith



Hydro Blue Pearl



Fathom Blue Pearl



Red Hot Pearl



Baltic Gray Metallic



Bright White



Diamond Black Crystal Pearl



*Colors may not be available on all models and may be limited/restricted.

SPECIFICATIONS

EXTERIOR DIMENSIONS*

	INCHES UNLESS OTHERWISE NOTED
Wheelbase	113
Overall Length	192.4
Body Width	74.8
Overall Width (at mirrors)	83.6
Overall Height (at roof rail)	64.8
Front Track	64.4
Rear Track	64.5
Ground Clearance	6.4
Approach Angle (deg)	19.2
Breakover Angle (deg)	14
Departure Angle (deg)	23.4
Drag Coefficient (Cd)	0.29

PERFORMANCE

	LIMITED	LAUNCH EDITION
Horsepower (SAE J2723)	500	600
Torque (lb-ft)	524	617
Electric Drive Motors (EDMs) (front/rear)	150/250	250/250
Battery Pack (SAE J2723; volts/kWh)	400/100.5	400/100.5
0-60 mph (estimated; seconds; rollout subtracted)	less than 4	3.4
Range (estimated; miles)	294 ¹	294 ¹
Charge Time		
– Level 1 (120 volt)	~ 32 hours (20-80%)	
– Level 2 (240 volt)	~ 6 hours (20-80%)	
– Level 3 DC Fast Charge	~ 23 minutes (20-80%)	

INTERIOR DIMENSIONS*

	INCHES UNLESS OTHERWISE NOTED
Front Row	
– Headroom	38
– Legroom	41.3
– Shoulder room	57.4
– Hip room	55.4
Second Row	
– Headroom	37.4
– Legroom	38
– Shoulder room	57.6
– Hip room	54.4
Sill Step Height	17.8
Load Floor Height	30.2
Frunk Volume (cu ft)	3
Cargo Volume (cu ft)	
– Behind front row	61
– Behind second row	30.6
SAE Total Interior Passenger Volume (cu ft)	99.5
Total Passenger Plus Cargo Volume (cu ft)	130.1
Seating Capacity (rows 1 - 2)	2/3

CAPACITIES / WEIGHTS

	LB
Curb Weight ¹	5,667
Maximum Payload ^{**}	1,033
Maximum Towing	3,500

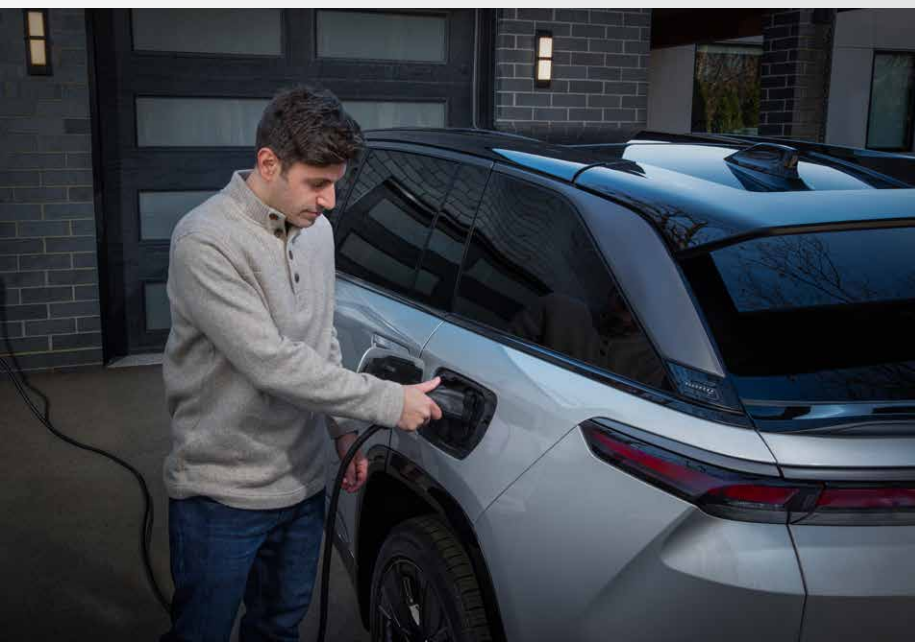
DYNAMICS

Suspension	
– Front	MacPherson Strut
– Rear	Integral Link
Steering	
– Type	Electric power, rack and pinion
– Overall ratio	15:1
– Turning diameter (curb-to-curb; ft)	40
– Steering turns (lock-to-lock)	2.54
Brakes	
– Type	Hydraulic disc
– Front	13.9 x 1.1-inches vented disc, 2 x 2.0-inches dual piston floating caliper
– Rear	13.9 x 0.87-inches vented disc, 1 x 2.0-inches single piston floating caliper with electronic park brake

¹Based on 2025MY vehicle information.

¹Curb weight includes standard equipment and full quantities of lubricant and coolant.

^{**}Payload is the maximum allowable weight of driver, passengers, cargo and options, rounded to the nearest 10 lb.



THE PURCHASE OF A WAGONEER S BATTERY ELECTRIC VEHICLE (BEV) COMES WITH THE CHOICE BETWEEN TWO CONVENIENT FREE2MOVE CHARGE PACKAGES

FREE2MOVE CHARGE PACKAGES

The Free2move Charge Home Package enables you to charge your vehicle from 20% to 80% in approximately six hours via a 48-amp Level 2 home charging station²⁰. Or choose the Free2move Charge Go Package, which includes \$600 in charging credits to be used at over 130,000 public charging stations across the U.S. and Canada. Wagoneer S drivers can charge their vehicle from 20% to 80% in 23 minutes²¹ with DC Fast Charge. See your retailer for full details.



Jeep®

BUILD YOURS TODAY >>



JEEP.COM

(800) 925-JEEP



Jeep is a registered trademark of FCA US LLC.

(1) Manufacturer's estimated range based on current internal data and a fully charged battery achievable under ideal driving conditions. Actual range may vary and depends on various factors, including but not limited to: weather conditions, traffic conditions, driving style, terrain, tire, wheel and additional accessories equipped on the vehicle. Contact dealer for more details. (2) This system is not intended to be used while vehicle is in motion. (3) Requires compatible iPhone. See dealer for phone compatibility. Data plan rates apply. Vehicle user interface is a product of Apple. Apple CarPlay is a trademark of Apple Inc. iPhone is a trademark of Apple Inc., registered in the U.S. and other countries. Apple terms of use and privacy statements apply. (4) To wirelessly use Android Auto on your display, you need a compatible Android smartphone with an active data plan. You can check which smartphones are compatible at g.co/androidauto/requirements. Android Auto is a trademark of Google LLC. (5) All SiriusXM services require a subscription, sold separately by SiriusXM, after the trial period. Your SiriusXM service will automatically stop at the end of your trial unless you decide to subscribe. **If you decide to continue service after the trial, the subscription plan chosen will automatically renew and be charged according to your chosen payment method at then-current rates.** Fees and taxes apply. See the SiriusXM Customer Agreement & Privacy Policy at www.siriusxm.com for full terms and how to cancel, which includes online methods or calling 1-866-635-2349. Available in the 48 contiguous United States, D.C., and Puerto Rico (with coverage limits and capable receiver). Visit www.siriusxm.com/FAQS for most current service area information. Availability of some services and features is subject to vehicle capabilities and location restrictions. All fees, content and features are subject to change. SiriusXM, Pandora and all related logos are trademarks of SiriusXM Radio Inc. and its respective subsidiaries. (6) Three-month / 3GB trial included with the purchase or lease of a new vehicle. Upon the earlier of either the expiration of the trial period or usage of included 3GBs, the trial ends. Purchase of a subscription is required to continue service. Wi-Fi Hotspot available through third-party provider subscription and subject to provider terms and conditions. Requires eligible vehicle with Internet-enabled mobile device. Contact your dealer for details. Wi-Fi Hotspot functionality available in U.S. and Canada only. Coverage and service not available everywhere. This feature is not intended for use by the driver while the vehicle is in motion. Always drive carefully. (7) All vehicles properly equipped to receive connected services come with a three-month trial of Assistance Package or Assistance + Navigation Package (if equipped), up to five years of Vehicle Performance Package, up to 10 years of Safety and Security Package effective from the date of purchase or lease of a new vehicle. Enrollment in trial is required to receive services. Upon expiration of trial period, purchase of a subscription is required to continue or renew services. Services are available on equipped vehicles purchased within the United States, Canada and Puerto Rico. Services can only be used where cellular coverage is available. See the applicable Terms of Service for complete terms and conditions, including service limitations. (8) For supported file formats, refer to the USB Port section of the Owner's Manual or DVD. (9) Always sit properly in designated seating positions with seat belts securely fastened at all times. (10) This system is a driver's convenience system, not a substitute for active driver involvement. The driver must remain aware of traffic conditions and be prepared to use the brakes to avoid collisions. (11) This system is a driver's convenience system, not a substitute for active driver involvement. The driver must remain aware of traffic conditions and maintain control of the vehicle. (12) This system is a driver convenience system, not a substitute for active driver involvement. The driver must remain aware of traffic conditions and be prepared to use the brakes to avoid collisions. (13) Always check entire surroundings visually before proceeding. (14) Always look before proceeding. An electronic drive aid is not a substitute for conscientious driving. Always be aware of your surroundings. (15) This system is an alert system for the front and sides of the vehicle. It is not a substitute for active driver involvement. The driver must remain aware of traffic conditions and be prepared to use the brakes to avoid collisions. (16) This system is an alert system for the front of the vehicle. It is not a substitute for active driver involvement. The driver must remain aware of traffic conditions and be prepared to use the brakes to avoid collisions. (17) Always drive carefully, consistent with conditions. Always wear your seat belt and obey traffic laws. (18) Always drive carefully, consistent with conditions. (19) Vehicle must be locked and system activated for alarm to sound. (20) Requires purchase and professional installation. Contact dealer for details. (21) Based on manufacturer's preproduction estimates. Charging time is with a Level 3 DC Fast Charge station. Actual charging times may vary.

©2025 FCA US LLC. All Rights Reserved. Jeep, the Jeep grille, ParkSense, Selec-Terrain, Uconnect and Wagoneer are registered trademarks of FCA US LLC. Free2move is a registered trademark of Stellantis N.V.

Alpine and the Alpine logo are registered trademarks of Alpine Electronics, Inc. All rights reserved. Apple, iPad and iPhone are registered trademarks and Apple CarPlay is a trademark of Apple Inc. Bluetooth is a registered trademark of Bluetooth SIG, Inc. Facebook and logo are registered trademarks of Meta Platforms, Inc. Falken is a registered trademark of Sumitomo Rubber Industries, Ltd. Google, Android, Android Auto, YouTube and other related marks are trademarks of Google LLC. Instagram is a registered trademark of Instagram, Inc. McIntosh is a registered trademark of McIntosh Laboratory, Inc. Pirelli is a registered trademark of Pirelli & C. SpA. SiriusXM Connected Vehicles Services Inc., Sirius, XM, SiriusXM, SiriusXM Guardian, and all related marks and logos are trademarks of SiriusXM Radio Inc. TikTok is a registered trademark of ByteDance Ltd. The X service marks (formerly Twitter) are the intellectual property of X Corp.

This document is a publication of FCA US LLC. All product illustrations and specifications are based upon current competitive information at the time of publication approval. FCA US LLC reserves the right to make changes from time to time, without notice or obligation, in prices, specifications, colors and materials, and to change or discontinue models which are considered necessary to the purpose of product improvement or for reasons of design and / or marketing. Jeep is a registered trademark of FCA US LLC.

Join fellow Jeep® Brand enthusiasts and tell your story by posting comments, participating in discussions, and sharing your photos and videos. Join our community on Facebook, Instagram, YouTube, X and TikTok.

